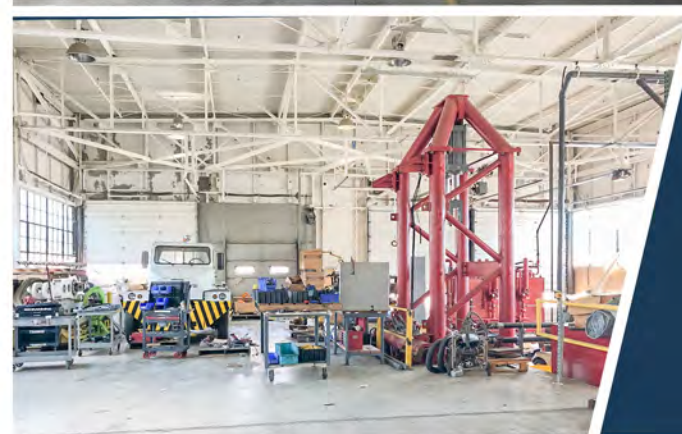
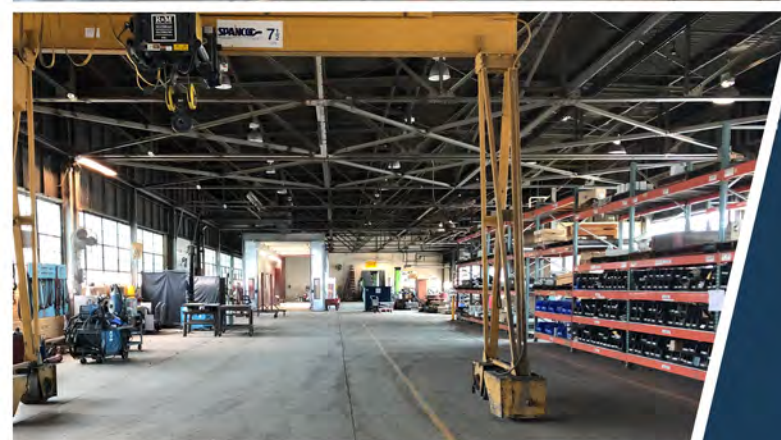
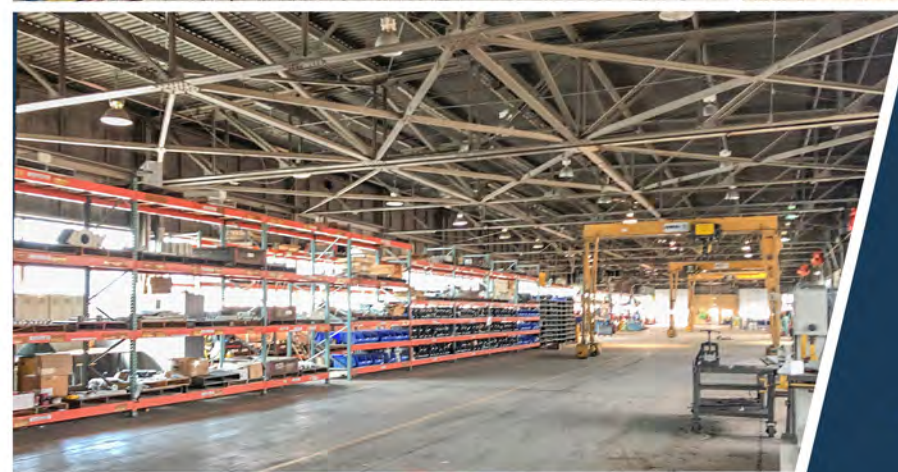


+/- 36,000 SF
AVAILABLE



800 E VIRGINIA AVE
WEST CHESTER

LOCATION

IMMEDIATE ACCESS TO ROUTE 202
AND ROUTE 3

FEATURES

16' CLEAR
CLEAR SPAN
PUBLIC UTILITIES
ADDITIONAL OUTDOOR STORAGE
9 DRIVE INS
2 DOCK DOORS

CONTACT

ELI KAHN (610) 563 5585
MATT ADAMS (484) 678 8555



■ DRIVE IN
■ DOCK DOOR

