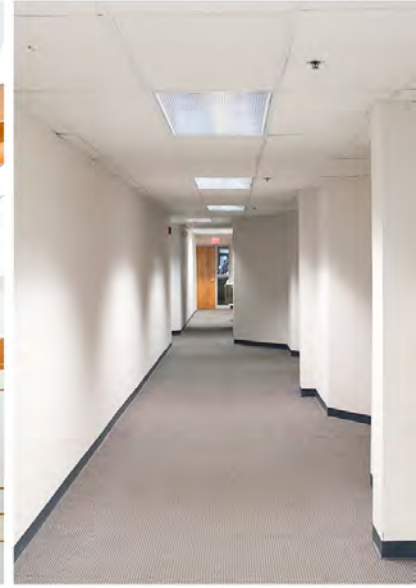


17 WEST GAY STREET
WEST CHESTER, PENNSYLVANIA

+/-2,300
S.F. AVAILABLE



LOCATION

WALKING DISTANCE
TO OVER 35
RESTAURANTS
PUBLIC PARKING
GARAGE LOCATED
LESS THAN A BLOCK
AWAY

FEATURES

ASKING RATE \$18.00 +
ELECTRIC
ATRIUM LOBBY



LEASING CONTACT

ELI KAHN
(610) 873 5585
EKAHN@EKAHNDEVELOPMENT.COM

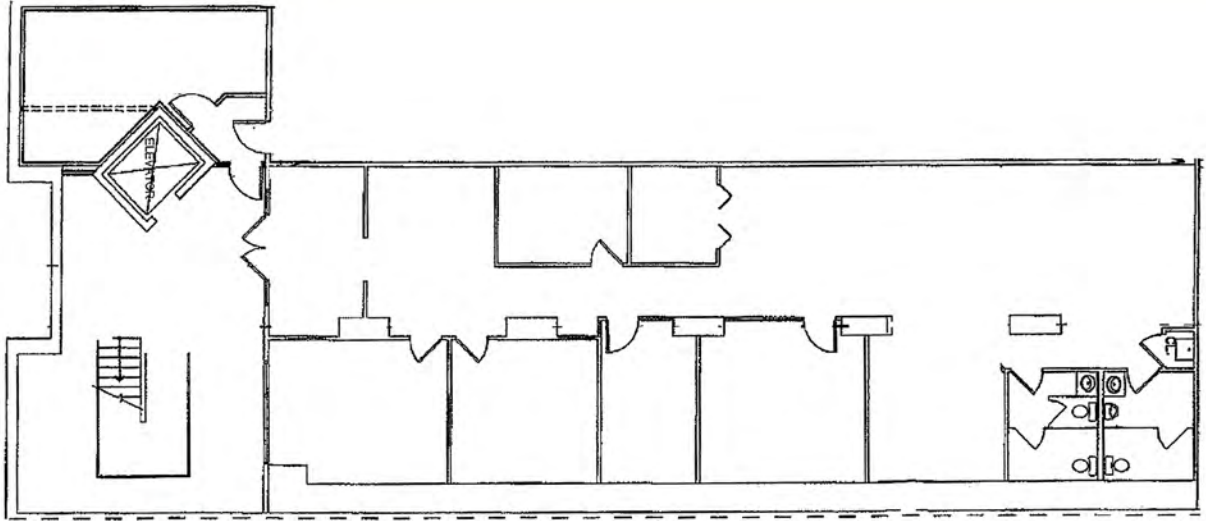
ADAM LOEW
(610) 873 5585
ALOEW@JLOEW.COM

MATT ADAMS
(484) 678 8555
MADAMS@EKAHNDEVELOPMENT.COM

17 WEST GAY STREET

WEST CHESTER, PENNSYLVANIA

Lower Level



EKAHN
DEVELOPMENT

JLOEW
& ASSOCIATES